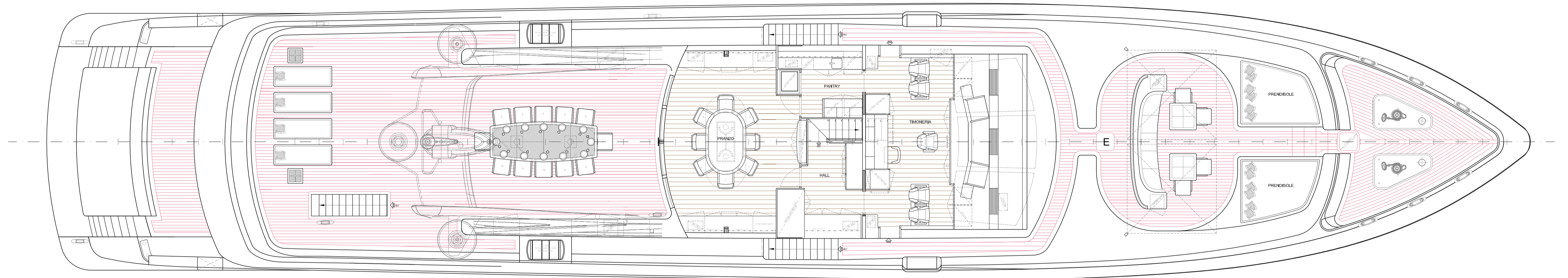




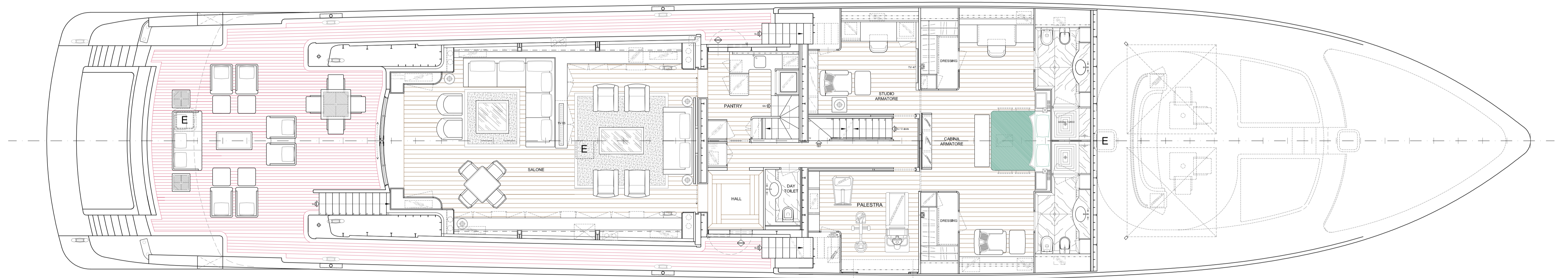
PROFILE

0 1 2 R3 4 5 R6 7 8 R9 10 11 PS12 13 R14 15 PS16 17 18 R19 20 21 R22 23 24 R25 26 PS27 28 29 R30 31 R32 33 PS34 35 R36 37 38 R39 40 PS41 42 43 R44 45 46 PS47 48 49 PS51 52 53 54 55 56 57



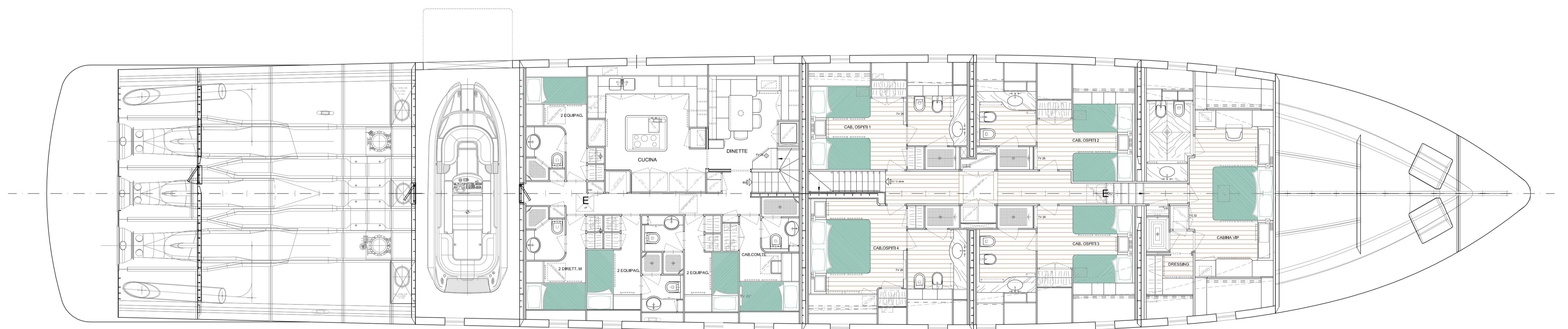
BRIDGE DECK

0 1 2 3 4 5 6 7 8 9 10 11 12 13 14 15 16 17 18 19 20 21 22 23 24 25 26 27 28 29 30 31 32 33 34 35 36 37 38 39 40 41 42 43 44 45 46 47 48 49 50 51 52 53 54 55 56 57



MAIN DECK

0 1 2 3 4 5 6 7 8 9 10 11 12 13 14 15 16 17 18 19 20 21 22 23 24 25 26 27 28 29 30 31 32 33 34 35 36 37 38 39 40 41 42 43 44 45 46 47 48 49 50 51 52 53 54 55 56 57



LOWER DECK

0 1 2 PS3 4 5 R6 7 8 R9 10 11 PS12 13 R14 15 PS16 17 18 R19 20 21 R22 23 24 R25 26 PS27 28 29 R30 31 R32 33 PS34 35 R36 37 38 R39 40 P41 42 43 R44 45 46 PS47 48 49 PS51 52 53 54 55 56 57

dis. n°	120.01.PG.01		CANTIERI NAVALI CODECASA TRE S.p.A. Piazzale San Benedetto del Tronto 7, 55049 VIAREGGIO - ITALY TEL. 0584.384982 - www.codecasayachts.com - FAX 0584.384323
NOME FILE:	120.01.PG.01_Plan-General.dwg		
DATA:	17/01/2013	COSTRUZIONE:	C 120 CODECASA 50s
SCALA:	1 : 75	OGGETTO:	PROFILE AND GENERAL ARRANGEMENT PLAN
DIS.:			
TAV. No.			
NOTE: This drawing is a design concept. Exact dimensions and positions are not to be taken from this drawing. vietata la riproduzione e la comunicazione a terzi all rights of this drawing are reserved			